

INSTA-LOCK™ TYPE A MALE ADAPTER X FEMALE BSP THREAD



Product Specifications

APPLICATION: Type A fitting is commonly threaded onto a pipe, threaded hose end or manifold system, which is connected and disconnected on a regular basis. Insta-Lock™ fittings are designed for liquids and dry bulk. Consult the chemical resistance guide for specific chemical recommendations.

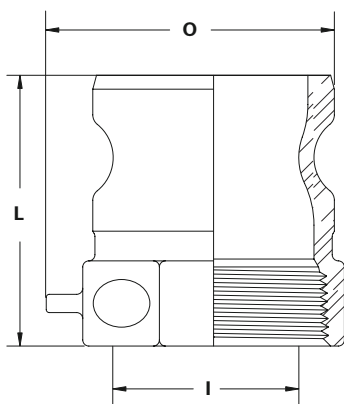
MATERIALS: Aluminum, 316# Stainless Steel.

PRESSURE RATING: Sizes 1/2"– 2", 250 PSI; sizes 2½"– 4", 150 PSI; sizes 5"– 6", 75 PSI. Recommended working pressure ratings based on ambient temperature (70°F).

BRANDING: Example: Continental ContiTech® A200SS.

PLANT CODES: 650-825 (aluminum)
650-841 (stainless steel)

INSTA-LOCK™ TYPE A MALE ADAPTER X FEMALE BSP THREAD *Available in NPT thread ex USA



SIZE.	ALUMINIUM	STAINLESS STEEL
1/2	A050AL	A050SS
3/4	A075AL	A075SS
1	A100AL	A100SS
1¼	A125AL	A125SS
1½	A150AL	A150SS
2	A200AL	A200SS
2½	A250AL	A250SS
3	A300AL	A300SS
4	A400AL	A400SS
5	A500AL	A500SS
6	A600AL	A600SS

SIZE.	DISTANCE CHAIN LUG EXTENDS FROM BODY	OVERALL LENGTH (L)	MAXIMUM WIDTH ACROSS ADAPTER (O)	MINIMUM ID (I)
in.	in.	in.	in.	in.
1/2	0.375	1.656	1.500	0.500
3/4	0.375	1.656	1.688	0.781
1	0.375	2.163	1.804	0.875
1¼	0.375	2.437	2.237	1.063
1½	0.375	2.531	2.368	1.375
2	0.375	2.781	2.909	1.750
2½	0.375	3.093	3.585	2.187
3	0.375	3.281	4.009	2.812
4	0.375	3.528	5.257	3.750
5	0.375	3.813	6.438	4.688
6	0.375	3.656	7.688	5.750

Note: Continental ContiTech® Insta-Lock Fittings are never to be used in steam or compressed air service.

INSTA-LOCK™ TYPE B FEMALE COUPLER X MALE BSP THREAD



Product Specifications

APPLICATION: Type B fitting is normally threaded onto a pipe or manifold which joins to a rubber hose assembly which is connected and disconnected regularly. Insta-Lock™ fittings are designed for liquids and dry bulk. Consult the chemical resistance guide for specific chemical recommendations.

MATERIALS: Aluminum, 316# Stainless Steel.

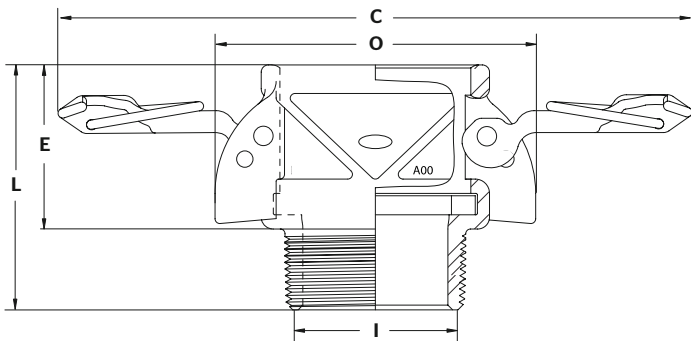
PRESSURE RATING: Sizes 1/2" - 2", 250 PSI; sizes 2½" - 4", 150 PSI; sizes 5" - 6", 75 PSI. Recommended working pressure ratings based on ambient temperature (70°F) with Standard Nitrile gaskets.

BRANDING: Example: Continental ContiTech® B200SS.

PLANT CODES: 650-826 (aluminum)
650-842 (stainless steel)

INSTA-LOCK™ TYPE B FEMALE COUPLER X MALE BSP THREAD

*Available in NPT thread ex USA



SIZE. ALUMINIUM STAINLESS STEEL

SIZE.	ALUMINIUM	STAINLESS STEEL
1/2	B050AL	B050SS
3/4	B075AL	B075SS
1	B100AL	B100SS
1¼	B125AL	B125SS
1½	B150AL	B150SS
2	B200AL	B200SS
2½	B250AL	B250SS
3	B300AL	B300SS
4	B400AL	B400SS
5	B500AL	B500SS
6	B600AL	B600SS

SIZE.	MAX WIDTH WITH CAM ARMS CLOSED (O)	OVERALL LENGTH (L)	MAXIMUM WIDTH ACROSS ADAPTER (O)	MINIMUM ID (I)	MAX WIDTH WITH CAM ARMS EXTENDED (C)
in.	in.	in.	in.	in.	
1/2	2.469	1.906	1.188	0.469	4.969
3/4	2.781	2.031	1.313	5.261	5.261
1	2.920	2.500	1.625	5.367	5.367
1¼	3.510	2.937	2.000	7.669	7.669
1½	3.830	2.937	2.000	7.967	7.967
2	4.210	3.218	2.156	8.340	8.340
2½	4.720	3.718	2.250	8.837	8.837
3	5.680	4.000	2.468	10.435	10.435
4	6.780	4.218	2.593	11.538	11.538
5	7.813	4.406	2.625	12.571	12.571
6	9.344	4.750	2.844	16.096	16.096

Note: Continental ContiTech® Insta-Lock Fittings are never to be used in steam or compressed air service. Continental ContiTech® Engineered Products Insta-Lock Cam Arms are designed exclusively for Insta-Lock fittings.

INSTA-LOCK™ TYPE C FEMALE COUPLER X HOSE SHANK



Product Specifications

APPLICATION: Type C fitting can be attached to a rubber hose with the use of interlocking ferrules, crimp sleeves, or bands. Insta-Lock™ fittings are designed for liquids and dry bulk. Consult the chemical resistance guide for specific chemical recommendations.

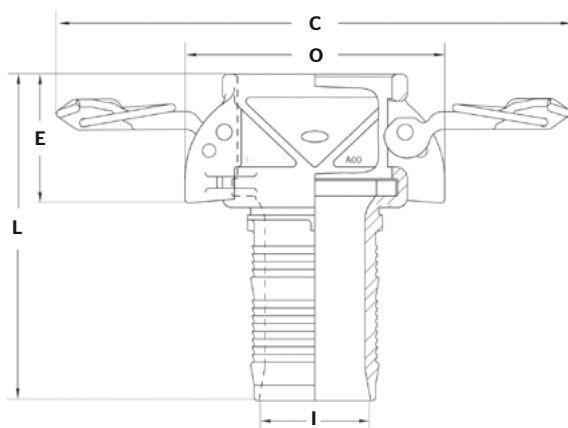
MATERIALS: Aluminum, 316# Stainless Steel.

PRESSURE RATING: Sizes 1/2"– 2", 250 PSI; sizes 2½"– 4", 150 PSI; sizes 5"– 6", 75 PSI. Recommended working pressure ratings based on ambient temperature (70°F) with Standard Nitrile gaskets.

BRANDING: Example: Continental ContiTech® C200SS.

ORDER CODES: 650-827 (aluminum)
650-843 (stainless steel)

INSTA-LOCK™ TYPE C FEMALE COUPLER X HOSE SHANK



SIZE.	ALUMINIUM	STAINLESS STEEL
1/2	C050AL	C050SS
3/4	C075AL	C075SS
1	C100AL	C100SS
1¼	C125AL	C125SS
1½	C150AL	C150SS
2	C200AL	C200SS
2½	C250AL	C250SS
3	C300AL	C300SS
4	C400AL	C400SS
5	C500AL	C500SS
6	C600AL	C600SS

SIZE.	MAX WIDTH WITH CAM ARMS CLOSED (O)	OVERALL LENGTH (L)	EXPOSED LENGTH (E)	MINIMUM ID (I)	MAX WIDTH WITH CAM ARMS EXTENDED (C)
in.	in.	in.	in.	in.	
1/2	2.469	3.063	1.188	0.260	4.969
3/4	2.781	3.656	1.313	0.490	5.261
1	2.920	4.250	1.625	0.718	5.367
1¼	3.510	4.625	2.000	0.906	7.669
1½	3.830	4.750	2.000	1.156	7.967
2	4.210	5.281	2.156	1.625	8.340
2½	4.720	5.750	2.250	2.093	8.837
3	5.680	6.840	2.468	2.560	10.435
4	6.780	7.218	2.593	3.468	11.538
5	7.813	7.563	2.625	4.469	12.571
6	9.344	8.969	2.844	5.469	16.096

Note: Continental ContiTech® Insta-Lock Fittings are never to be used in steam or compressed air service. Continental ContiTech® Engineered Products Insta-Lock Cam Arms are designed exclusively for Insta-Lock fittings.

INSTA-LOCK™ TYPE D FEMALE COUPLER X FEMALE THREAD



Product Specifications

APPLICATION: Type D fitting is commonly threaded onto a pipe, threaded hose end or manifold system, which is connected and disconnected on a regular basis. Insta-Lock™ fittings are designed for liquids and dry bulk. Consult the chemical resistance guide for specific chemical recommendations.

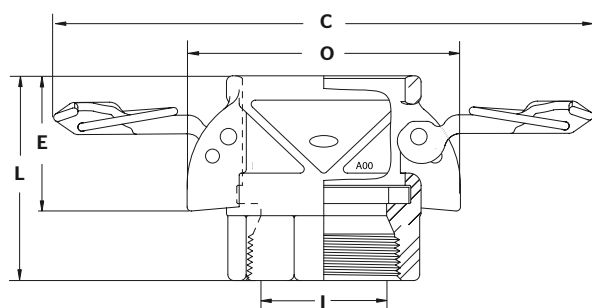
MATERIALS: Aluminum, 316# Stainless Steel.

PRESSURE RATING: Sizes 1" - 2", 250 PSI; sizes 2½" - 4", 150 PSI; sizes 5" - 6", 75 PSI. Recommended working pressure ratings based on ambient temperature (70°F) with Standard Nitrile gaskets.

BRANDING: Example: Continental ContiTech® D200SS.

ORDER CODES: 650-828 (aluminum)
650-844 (stainless steel)

INSTA-LOCK™ TYPE D FEMALE COUPLER X FEMALE THREAD *Available in NPT thread ex USA

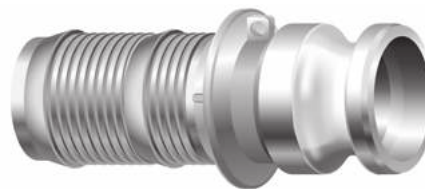


SIZE.	ALUMINIUM	STAINLESS STEEL
1/2	D050AL	D050SS
3/4	D075AL	D075SS
1	D100AL	D100SS
1¼	D125AL	D125SS
1½	D150AL	D150SS
2	D200AL	D200SS
2½	D250AL	D250SS
3	D300AL	D300SS
4	D400AL	D400SS
5	D500AL	D500SS
6	D600AL	D600SS

SIZE.	MAX WIDTH WITH CAM ARMS CLOSED (O)	OVERALL LENGTH (L)	EXPOSED LENGTH (E)	MINIMUM ID (I)	MAX WIDTH WITH CAM ARMS EXTENDED (C)
in.	in.	in.	in.	in.	
1/2	2.469	1.813	1.188	0.656	4.969
3/4	2.781	2.063	1.313	0.813	5.261
1	2.920	2.375	1.975	1.000	5.367
1¼	3.510	2.687	2.350	1.300	7.669
1½	3.830	2.843	2.370	1.560	7.967
2	4.210	3.156	2.531	1.937	8.340
2½	4.720	3.437	2.625	2.312	8.837
3	5.680	3.718	2.849	2.937	10.435
4	6.780	4.030	2.994	3.750	11.538
5	7.813	4.313	2.563	4.688	12.571
6	9.344	4.513	2.719	5.750	16.096

Note: Continental ContiTech® Insta-Lock Fittings are never to be used in steam or compressed air service. Continental ContiTech® Engineered Products Insta-Lock Cam Arms are designed exclusively for Insta-Lock fittings.

INSTA-LOCK™ TYPE E MALE ADAPTER X HOSE SHANK



Product Specifications

APPLICATION: Type E fitting can be attached to a rubber hose with the use of interlocking ferrules, crimp sleeve and bands. Insta-Lock™ fittings are designed for liquids and dry bulk. Consult the chemical resistance guide for specific chemical recommendations.

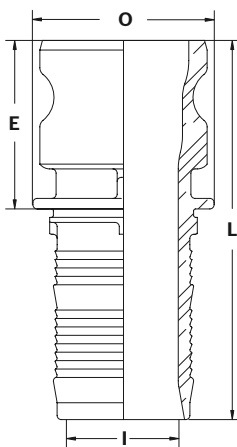
MATERIALS: Aluminum, 316# Stainless Steel and Brass.

PRESSURE RATING: Sizes 1" - 2", 250 PSI; sizes 2½" - 4", 150 PSI; sizes 5" - 6", 75 PSI. Recommended working pressure ratings based on ambient temperature (70°F).

BRANDING: Example: Continental ContiTech® E200SS.

ORDER CODES: 650-829 (aluminum)
650-845 (stainless steel)

INSTA-LOCK™ TYPE E MALE ADAPTER X HOSE SHANK

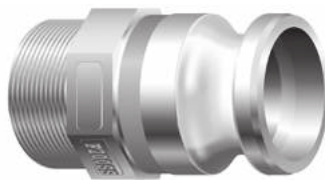


SIZE.	ALUMINIUM	STAINLESS STEEL
1/2	E050AL	E050SS
3/4	E075AL	E075SS
1	E100AL	E100SS
1¼	E125AL	E125SS
1½	E150AL	E150SS
2	E200AL	E200SS
2½	E250AL	E250SS
3	E300AL	E300SS
4	E400AL	E400SS
5	E500AL	E500SS
6	E600AL	E600SS

SIZE.	MAX OD (O)	OVERALL LENGTH (L)	EXPOSED LENGTH (E)	MINIMUM ID (I)
in.	in.	in.	in.	in.
1/2	1.188	3.500	1.625	0.260
3/4	1.262	3.969	1.625	0.490
1	1.625	4.569	1.944	0.718
1¼	2.000	4.812	2.187	0.906
1½	2.312	5.000	2.250	1.156
2	2.687	5.625	2.500	1.625
2½	3.062	6.187	2.687	2.093
3	3.781	7.125	2.750	2.562
4	4.875	7.434	2.809	3.468
5	6.563	7.844	2.906	4.469
6	7.125	9.188	3.063	5.469

Note: Continental ContiTech® Insta-Lock Fittings are never to be used in steam or compressed air service.

INSTA-LOCK™ TYPE F MALE ADAPTER X MALE BSP THREAD



Product Specifications

APPLICATION: Type F fitting is normally threaded into pipe or manifold connections and mated with Part C, Part B, or Part D. Used in applications that require frequent connections. Insta-Lock™ fittings are designed for liquids and dry bulk. Consult the chemical resistance guide for specific chemical recommendations.

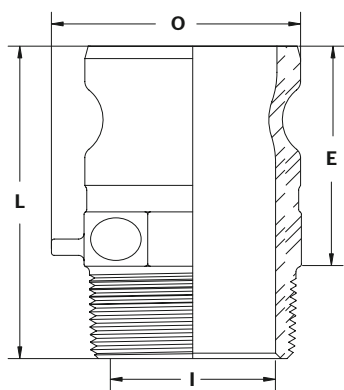
MATERIALS: Aluminum, 316# Stainless Steel.

PRESSURE RATING: Sizes 1/2" - 2", 250 PSI; sizes 2½" - 4", 150 PSI; sizes 5" - 6", 75 PSI. Recommended working pressure ratings based on ambient temperature (70°F).

BRANDING: Example: Continental ContiTech® F200SS.

ORDER CODES: 650-830 (aluminum)
650-846 (stainless steel)

INSTA-LOCK™ TYPE F MALE ADAPTER X MALE BSP THREAD *Available in NPT thread ex USA

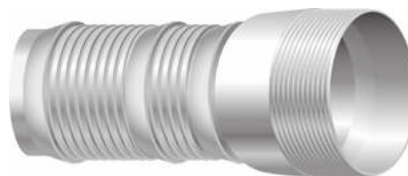


SIZE.	ALUMINIUM	STAINLESS STEEL
1/2	F050AL	F050SS
3/4	F075AL	F075SS
1	F100AL	F100SS
1¼	F125AL	F125SS
1½	F150AL	F150SS
2	F200AL	F200SS
2½	F250AL	F250SS
3	F300AL	F300SS
4	F400AL	F400SS
5	F500AL	F500SS
6	F600AL	F600SS

SIZE.	MAX WIDTH WITH ACROSS ADAPTER (O)	OVERALL LENGTH (L)	EXPOSED LENGTH (E)	MINIMUM ID (I)	DISTANCE CHAIN LUG EXTENDS FROM BOD (C)
in.	in.	in.	in.	in.	
1/2	1.150	2.250	1.531	0.469	0.375
3/4	1.688	2.375	1.656	0.688	0.375
1	1.730	2.819	2.038	0.875	0.375
1¼	2.130	3.156	2.279	1.187	0.375
1½	2.300	3.222	2.347	1.437	0.375
2	2.909	3.593	2.596	1.750	0.375
2½	3.281	4.218	2.812	2.187	0.375
3	3.844	4.343	2.875	2.812	0.375
4	4.994	4.746	3.184	3.734	0.375
5	6.188	4.906	3.125	4.688	0.375
6	7.500	5.219	3.313	5.750	0.375

Note: Continental ContiTech® Insta-Lock Fittings are never to be used in steam or compressed air service. Continental ContiTech® Insta-Lock Cam Arms are designed exclusively for Insta-Lock fittings.

INSTA-LOCK™ INTERLOCKING STAINLESS STEEL MALE NPT & BSP HOSE STEMS



Product Specifications

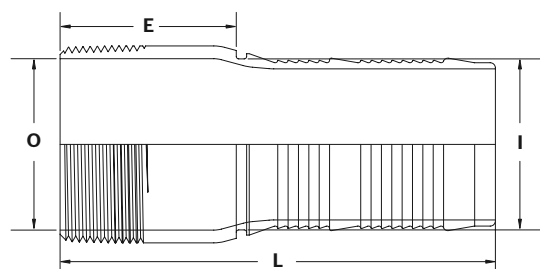
APPLICATION: Interlocking Stainless Steel Male NPT & BSP Hose Stem fittings are designed to be attached to a rubber hose with the use of a Continental ContiTech® Insta-Lock™ Ferrule. Consult the chemical resistance guide for specific chemical resistance recommendations.

MATERIALS: 316# Stainless Steel.

PRESSURE RATING: Sizes 1" to 2" 250 PSI, 2½" to 4" 150 PSI. Recommended working pressure ratings based on ambient temperature (70°F).

ORDER CODES: 604-824 (stainless steel)

INSTA-LOCK™ INTERLOCKING STAINLESS STEEL MALE NPT & BSP HOSE STEMS



SIZE.	NPT	BSP
1	GTM100SS	GTM100SSBT
1¼	GTM125SS	GTM100SSBT
1½	GTM150SS	GTM150SSBT
2	GTM200SS	GTM200SSBT
2½	GTM250SS	GTM250SSBT
3	GTM300SS	GTM300SSBT
4	GTM300SS	GTM400SSBT

SIZE.	MAXIMUM OD (O)	OVERALL LENGTH (L)	EXPOSED LENGTH (E)	MINIMUM ID (I)
in.	in.	in.	in.	in.
1	1.315	4.375	1.750	0.830
1¼	1.660	4.500	1.875	0.830
1½	1.900	4.750	2.000	0.830
2	2.375	5.250	2.125	0.830
2½	2.875	6.125	2.625	2.240
3	3.500	7.000	2.625	2.240
4	4.500	7.000	3.000	2.240

Note: Continental ContiTech® Insta-Lock Fittings are never to be used in steam or compressed air service.

INSTA-LOCK™ DUST CAP



Product Specifications

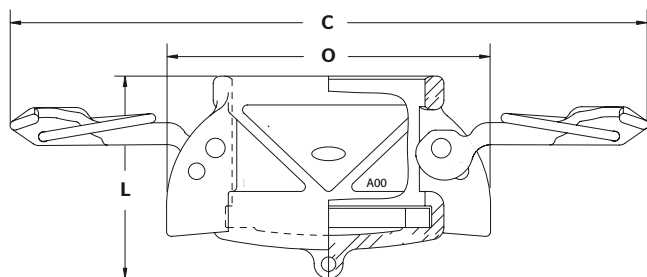
APPLICATION: Dust cap is used to seal the pipe system and hose assemblies during non-use or transfer of assembly. Mating parts are the Part A, Part E and Part F.

MATERIALS: Aluminum, 316# Stainless Steel and Brass (standard Nitrile gasket).

BRANDING: Example: Continental ContiTech® DC200SS.

ORDER CODES: 650-831 (aluminum)
650-847 (stainless steel)

INSTA-LOCK™ DUST CAP



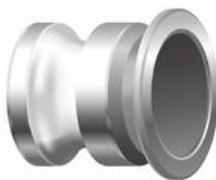
SIZE.	ALUMINIUM	STAINLESS STEEL
1/2	DC050AL	DC050SS
3/4	DC075AL	DC075SS
1	DC100AL	DC100SS
1¼	DC125AL	DC125SS
1½	DC150AL	DC150SS
2	DC200AL	DC200SS
2½	DC250AL	DC250SS
3	DC300AL	DC300SS
4	DC400AL	DC400SS
5	DC500AL	DC500SS
6	DC600AL	DC600SS

SIZE.	MAX WIDTH WITH CAM CLOSED (O)	OVERALL LENGTH (L)	OD WITH CAM ARMS EXTENDED (C)	DISTANCE CHAIN LUG LUG EXTENDS FROM BODY
in.	in.	in.	in.	
1/2	2.469	1.625	4.969	0.375
3/4	2.781	1.625	5.261	0.375
1	2.920	2.086	5.367	0.375
1¼	3.510	2.360	7.669	0.375
1½	3.830	2.400	7.967	0.375
2	4.210	2.633	8.340	0.375
2½	4.720	2.786	8.837	0.375
3	5.680	2.957	10.435	0.375
4	6.780	3.134	11.538	0.375
5	7.813	3.219	12.571	0.375
6	9.344	3.500	16.096	0.375

Note: Continental ContiTech® Insta-Lock Fittings are never to be used in steam or compressed air service. Continental ContiTech® Insta-Lock Cam Arms are designed exclusively for Insta-Lock fittings.

Warning: Dust Caps and Dust Plugs are not to be used in pressure applications for safety and environmental reasons.

INSTA-LOCK™ DUST PLUG



Product Specifications

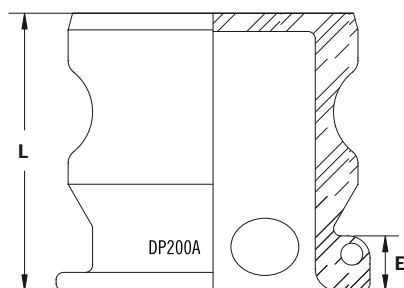
APPLICATION: Dust plug is used to seal the pipe system and hose assemblies during non-use or transfer of assembly. Mating parts are the Part C, Part B and Part D.

MATERIALS: Aluminum, 316# Stainless Steel and Brass.

BRANDING: Example: Continental ContiTech® DP200SS.

ORDER CODES: 650-832 (aluminum)
650-848 (stainless steel)

INSTA-LOCK™ DUST PLUG



SIZE.	ALUMINIUM	STAINLESS STEEL
1/2	DP050AL	DP050SS
3/4	DP075AL	DP075SS
1	DP100AL	DP100SS
1¼	DP125AL	DP125SS
1½	DP150AL	DP150SS
2	DP200AL	DP200SS
2½	DP250AL	DP250SS
3	DP300AL	DP300SS
4	DP400AL	DP400SS
5	DP500AL	DP500SS
6	DP600AL	DP600SS

SIZE.	OVERALL LENGTH (L)	EXPOSED LENGTH (E)
in.	in.	in.
1/2	1.531	0.500
3/4	1.563	0.500
1	1.843	0.469
1¼	2.125	0.469
1½	2.156	0.469
2	2.375	0.469
2½	2.437	0.469
3	2.500	0.469
4	2.559	0.469
5	2.594	0.469
6	2.781	0.469

Note: Continental ContiTech® Fittings are never to be used in steam or compressed air service.

Warning: Dust Caps and Dust Plugs are not to be used in pressure applications for safety and environmental reasons.

INSTA-LOCK™ REPAIR KITS



Product Specifications

APPLICATION: 316# Stainless Steel and Brass.

MATERIALS: 1 handle, 1 finger ring, 1 pin.

ORDER CODES: 605-855 (stainless steel)
605-856 (brass)

PART NUMBER SYSTEM: First 3 digits = Size
S = Stainless Steel
B = Brass
G = Continental ContiTech® Insta-Lock Handle
M = Music Wire Ring
P = Pin

INSTA-LOCK™ REPAIR KITS

SIZE.	STAINLESS STEEL HANDLES	BRASS HANDLES
in.	in.	in.
1/2	050SGMP	050BGMP
3/4	100SGMP	100BGMP
1	100SGMP	100BGMP
1¼	125SGMP	125BGMP
1½	150SGMP	150BGMP
2	200SGMP	200BGMP
2½	250SGMP	250BGMP
3	300SGMP	300BGMP
4	300SGMP	300BGMP
5	300SGMP	300BGMP
6	600SGMP	600BGMP

INSTA-LOCK™ GASKETS



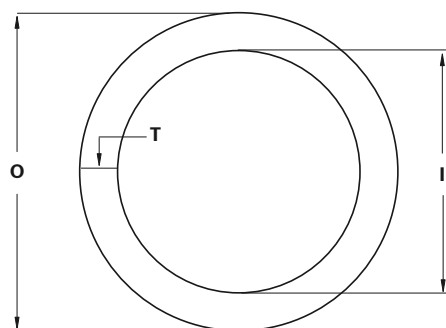
Product Specifications

MATERIALS: Nitrile, Viton®, Teflon® Encapsulated Viton®, White Neoprene, Neoprene, Silicone.

ORDER CODES: 650-849 (Nitrile) 650-850 (Viton®) 650-851 (Teflon®)
650-852 (White Neoprene) 650-853 (Neoprene) 650-854 (Silicone)

PART NUMBER SYSTEM: G = Gasket
First 3 digits = Size of Gasket
Letters = Gasket Material Code

INSTA-LOCK™ GASKETS



SIZE.	OD (O)	ID (I)	THICKNESS (T)
1/2	1.031	0.688	0.156
3/4	1.375	0.875	0.218
1	1.563	1.062	0.250
1¼	1.938	1.359	0.250
1½	2.188	1.625	0.250
2	2.625	2.000	0.250
2½	3.125	2.375	0.250
3	3.719	3.000	0.250
4	4.875	4.000	0.250
5	5.906	4.875	0.250
6	7.063	6.000	0.250

SIZE.	NITRILE	VITON®	TEFLON® ENCAPSULATED VITON®	WHITE NEOPRENE	NEOPRENE	SILICONE
in.	in.	in.	in.	in.	in.	in.
1/2	G050BN	G050VT	G050TE	G050WN	G050NE	G050SL
3/4	G075BN	G075VT	G075TE	G075WN	G075NE	G075SL
1	G100BN	G100VT	G100TE	G100WN	G100NE	G100SL
1¼	G125BN	G125VT	G125TE	G125WN	G125NE	G125SL
1½	G150BN	G150VT	G150TE	G150WN	G150NE	G150SL
2	G200BN	G200VT	G200TE	G200WN	G200NE	G200SL
2½	G250BN	G250VT	G250TE	G250WN	G250NE	G250SL
3	G300BN	G300VT	G300TE	G300WN	G300NE	G300SL
4	G400BN	G400VT	G400TE	G400WN	G400NE	G400SL
5	G500BN	G500VT	G500TE	G500WN	G500NE	G500SL
6	G600BN	G600VT	G600TE	G600WN	G600NE	G600SL

Nitrile = BN; Black
Teflon® = TE; White/Black with yellow stripe

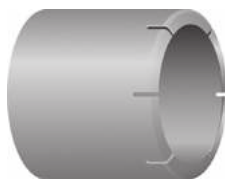
Neoprene = NE; Black with red stripe
Viton® = VT; Black with yellow stripe

White Neoprene = WN; White
Silicone = SL; Red

Viton® is a registered trademark of DuPont Dow Elastomers L.L.C.

Teflon® is a registered trademark of E.I. du Pont de Nemours and Company.

INSTA-LOCK™ INTERLOCKING FERRULES



Product Specifications

MATERIALS: 304# Stainless Steel
Plated Carbon Steel

PART NUMBER SYSTEM: FRSS200244 or FRCS200244
FR = Ferrule; SS = Stainless Steel; CS = Plated Carbon Steel
First 3 digits = Inside Diameter of Hose
Fourth digit = Inside Diameter of Ferrule in inches.
Fifth & sixth digits = Inside Diameter of Ferrule in 64ths of an inch.

INSTA-LOCK™ INTERLOCKING FERRULES Non-Stock

STAINLESS STEEL						SILICONE	
1"		2"		3"		1½"	
	FRSS100124		FRSS200232		FRSS300332		FRCS150208
	FRSS100128		FRSS200236		FRSS300336		FRCS150212
	FRSS100132		FRSS200240		FRSS300340		FRCS150216
	FRSS100136		FRSS200244		FRSS300344		
	FRSS100140		FRSS200248		FRSS300348	2"	FRCS200232
			FRSS200252		FRSS300352		FRCS200236
1¼"	FRSS125144		FRSS200256		FRSS300356		FRCS200240
	FRSS125148		FRSS200260		FRSS300360		FRCS200244
	FRSS125152				FRSS300400		FRCS200248
	FRSS125156	2½"	FRSS250256		FRSS300404		
			FRSS250260			3"	FRCS300336
1½"	FRSS150156		FRSS250300	4"	FRSS400436		FRCS300340
	FRSS150160		FRSS250304		FRSS400440		FRCS300344
	FRSS150200		FRSS250308		FRSS400444		FRCS300348
	FRSS150204		FRSS250312		FRSS400448		
	FRSS150208		FRSS250316		FRSS400452	4"	FRCS400444
	FRSS150212		FRSS250320		FRSS400456		FRCS400448
	FRSS150216		FRSS250324		FRSS400460		FRCS400452
	FRSS150220				FRSS400500		
					FRSS400504		